

Pinelands Commission

PERMANENT LAND PROTECTION

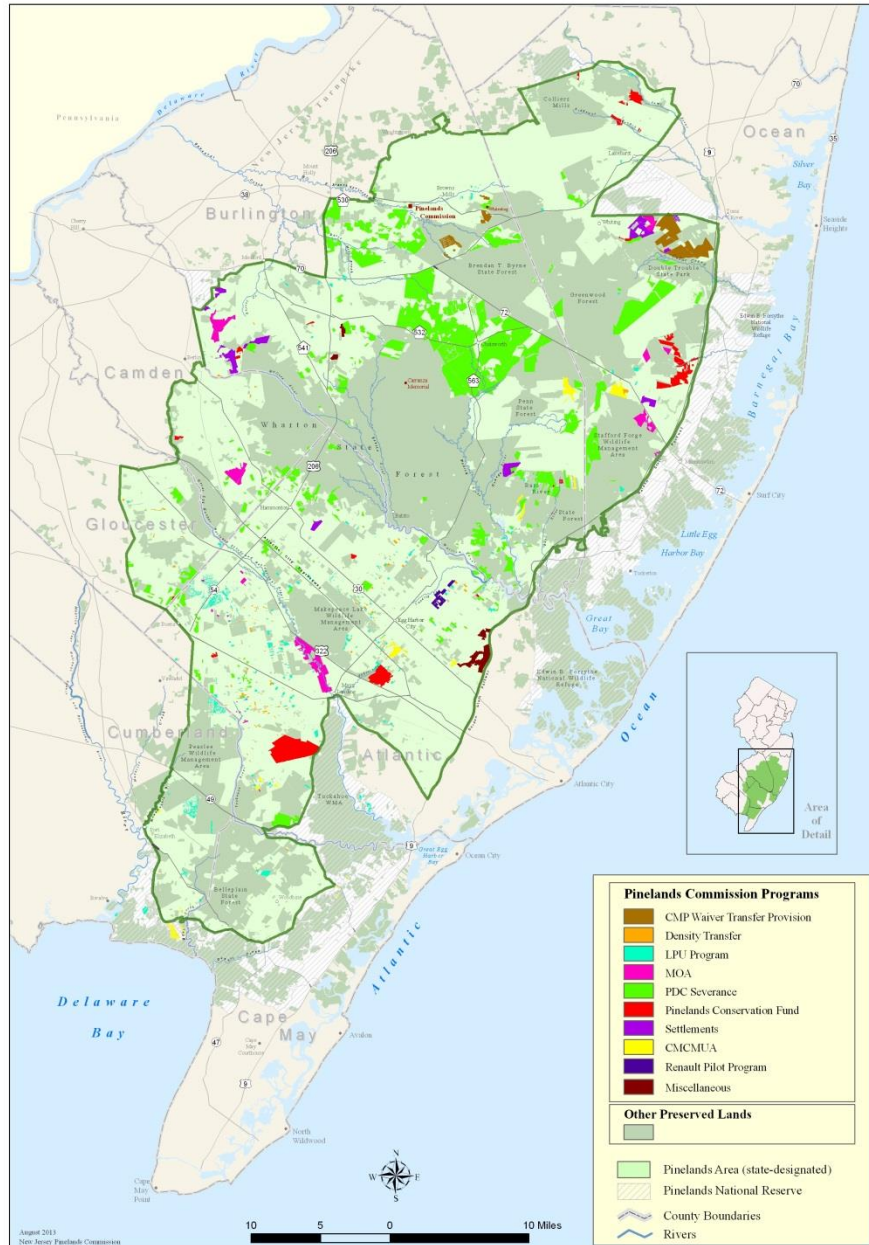
August 28, 2013



Photo by Paul Leakan
Pinelands Commission



Permanently Protected Lands



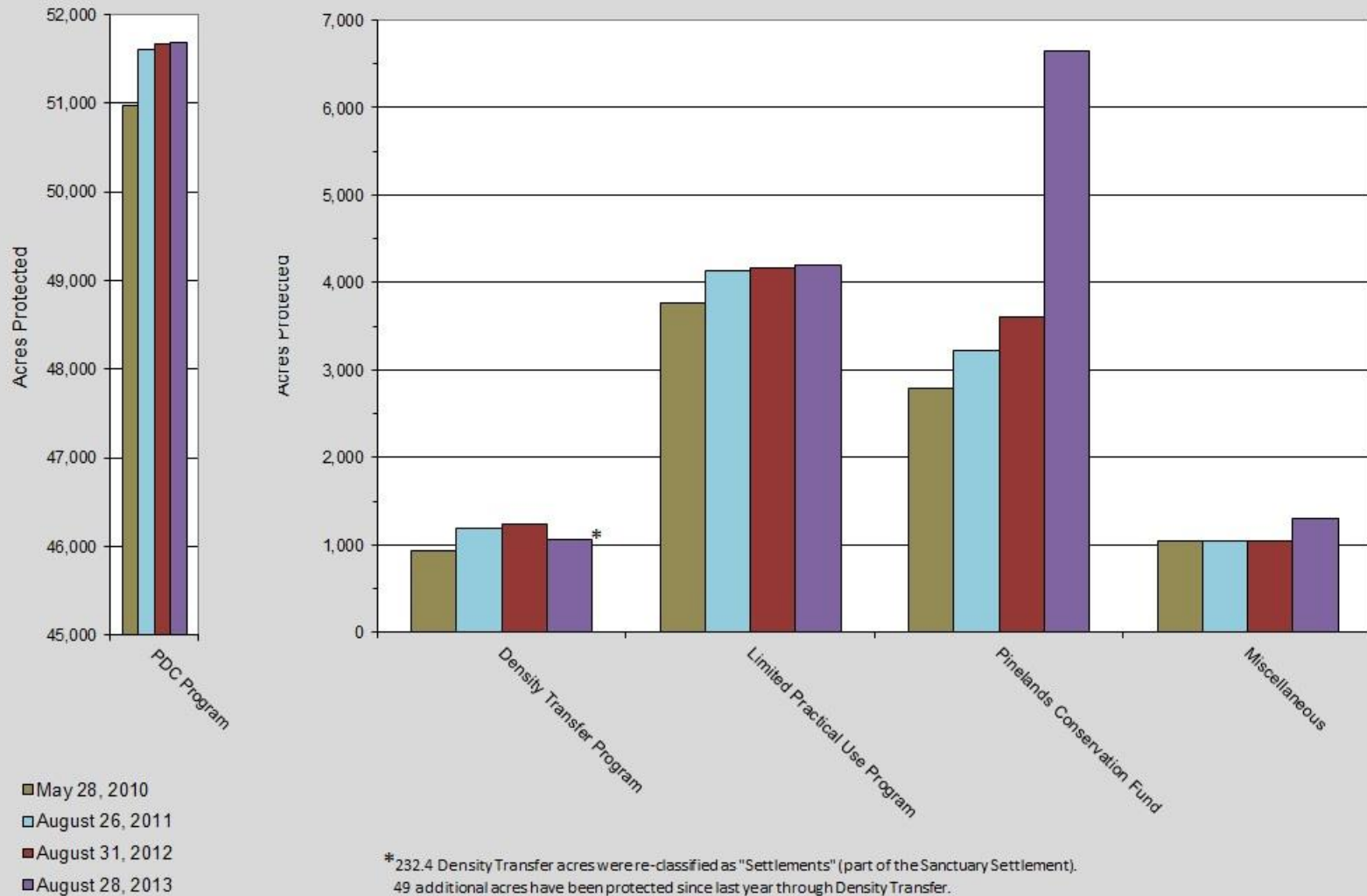
Acres Protected Since August 31, 2012

Pinelands Programs

An additional 3,396 acres have been protected through Pinelands Commission programs in the last year

- **Pinelands Conservation Fund – 3,050 acres**
- **PDC Program – 20 acres**
- **Limited Practical Use Program – 31 acres**
- **Density Transfer – 49 acres**
- **Miscellaneous – 246 acres**

Permanent Land Protection in the Pinelands Area Pinelands Programs Only as of Aug 28, 2013



*232.4 Density Transfer acres were re-classified as "Settlements" (part of the Sanctuary Settlement).
49 additional acres have been protected since last year through Density Transfer.

Permanent Land Protection at a Glance

Approximately 446,000 acres protected – 47% of the Pinelands Area

418,000 of those acres - 94% of the protected land - falls within the Conservation Areas:

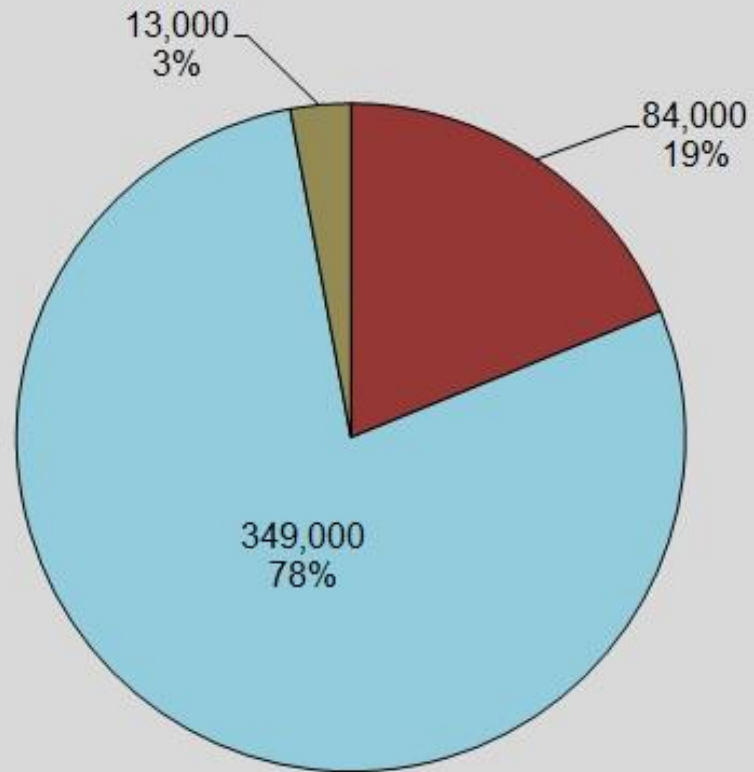
Preservation Area

Special Agricultural Production Area

Forest Area

Agricultural Production Area

**Permanent Land Protection
in the Pinelands Area
Pinelands Programs & Other Initiatives**
as of August 28, 2013



■ Pinelands Programs □ Other Government Land Protection Initiatives ■ NGO Land Protection Initiatives

**Permanent Land Protection
in the Pinelands Area
Pinelands Programs & Other Initiatives
as of August 28, 2013**

